

A close-up photograph of a person's long, light brown hair. A hand wearing a pink nitrile glove is using a white cloth to wipe a hair extension. A black clip is visible at the top of the hair. The background is dark and out of focus.

Removing hair extensions

Learning outcomes

- Maintain effective and safe methods of working when removing hair extensions.
- Remove hair extensions.

Introduction

You should always recommend that clients have their attachments professionally removed in the salon to avoid damage to their hair.

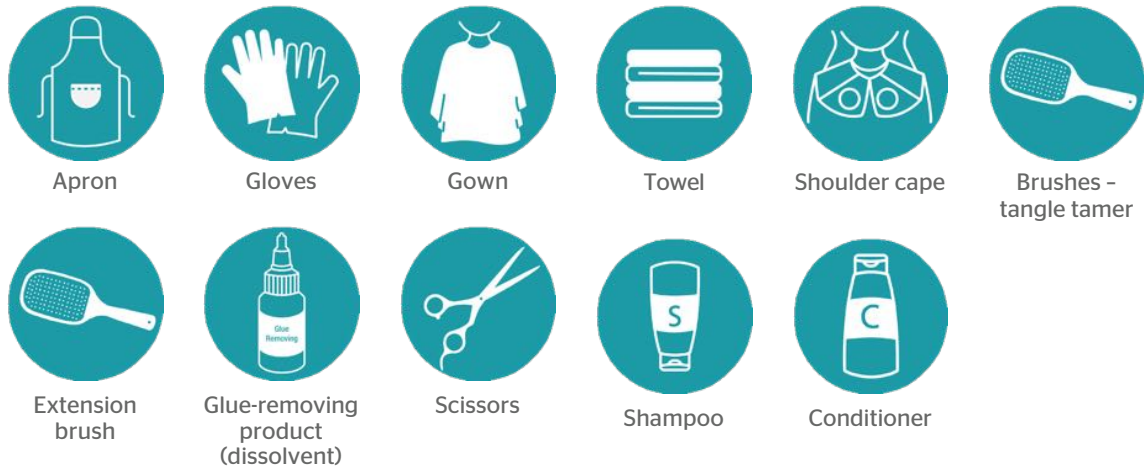
Clip-in hair attachments may be removed by the client and can be reused to recreate the look themselves.

You must follow the manufacturer's instructions when removing added hair, using the correct products to remove each type of attachment.

When removing hair attachments, you must establish if there are any signs of traction alopecia which can be identified through hair loss/thinning of the hair usually around the temples or behind the ears. It is caused by putting the hair under constant strain or tension. This could have been from a result of wearing the hair in tight plaits or twists. The source of the tension needs to be removed and the client may need to be referred to a trichologist.

Removing hair extensions

Tools required for this treatment



Removing sewn-in wefts

Tools required for this treatment



Step 1

- Cut the stitches.

Tip:

Be careful you don't cut the natural hair.

Tip:

The removal solution is highly flammable so should be used in a well-ventilated area. Do not allow anyone to smoke when the solvent is being used and always use the correct PPE for yourself and your client. You must always follow the manufacturer's instructions when removing added hair, using the correct products to remove each type of attachment.

Removing glued in or taped-in wefts

Tools required for this treatment



Step 1

- Ensure you are wearing gloves. Apply the glue-removing product to soften the glue.
- Remove the tape, then remove the weft.

Removing bonded wefts

Tools required for this treatment



Gown



Towel



Scissors



Shoulder cape



Glue-removing product (dissolvent)



Gloves



Apron



Brushes (tangle tamer, extension)

Step 1

- Put on protective gloves.
- Section the hair and use the removal tool to crush the bond, protecting the hair as you apply the removal solution.
- Once the adhesive breaks down, crush the bond again and pull the extension gently away.



Tips for all types of hair attachment removals

Once the added hair has been effectively removed, you will need to carry out a thorough shampoo and conditioning treatment on the hair. This will ensure that the hair and scalp are free from products, hair attachments and debris.

Always use your products and tools correctly when removing the added hair to avoid damaging the hair and scalp.

Your aftercare and advice for this type of service is very important. Not only could your clients lose the desired result quickly if they are not advised on how to maintain it, but they may also cause permanent damage to their hair.

When removing hair attachments you must establish if there are any signs of traction alopecia which can be identified through hair loss/thinning of the hair, usually around the temples or behind the ears. It is caused by putting the hair under constant strain or tension. This could have been from a result of wearing the hair in tight plaits or twists. The source of the tension needs to be removed and the client may need to be referred to a trichologist.